


Provo River Restoration Project February 2002

 Provo River Restoration Project Boundary

Channel Construction

 Completed


 In Progress


 Planned 2002

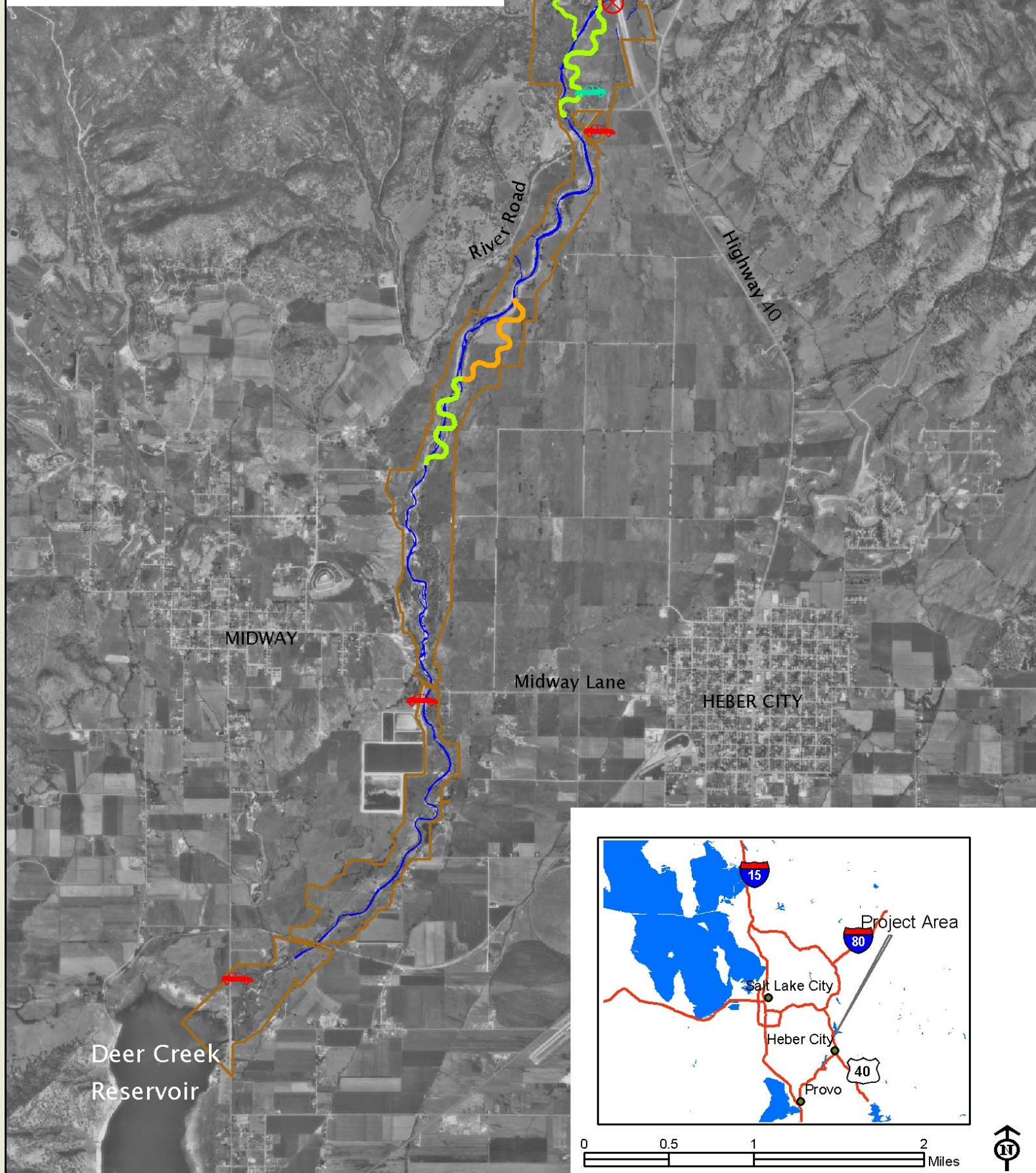
 Existing River Channel

Angler-Access Parking Areas

 Constructed

 Planned 2002

 Closed Parking



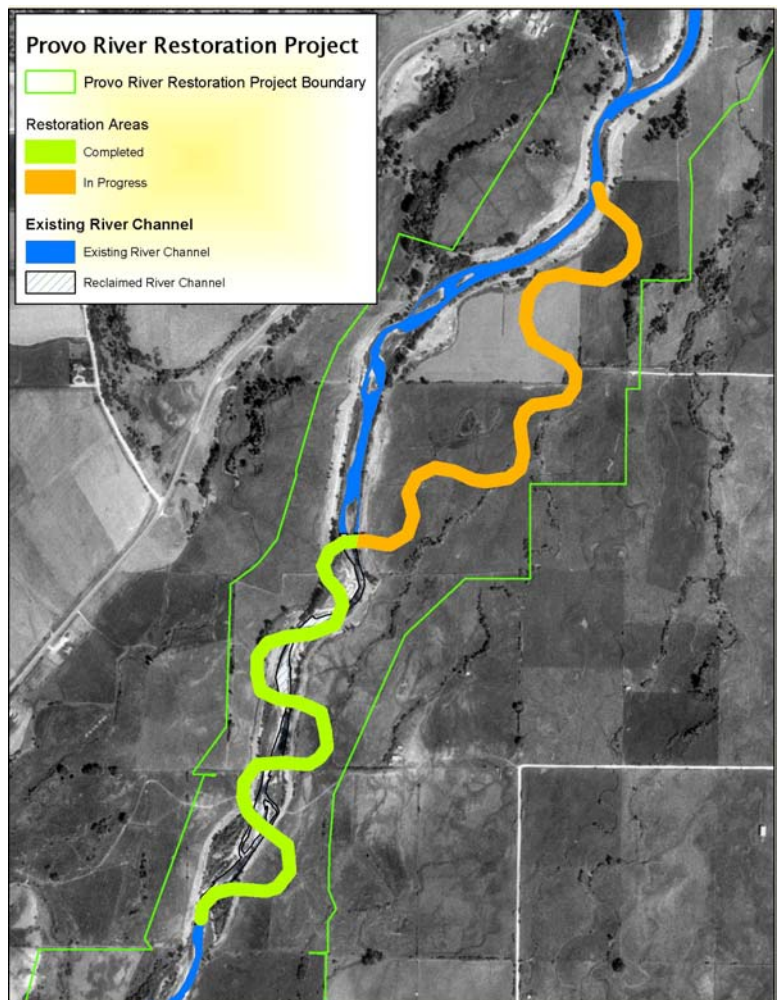
Utah Reclamation Mitigation and Conservation Commission

Provo River Restoration Project Winter Update 2002

Restoration that began last summer on an approximately 2-mile reach of Provo River above Midway Lane in Midway, Utah is over 50% complete (see map to the right). Public access is now open to the lower half of this reach (shown in green) where water is flowing into the reconstructed channel. Public access is closed to the upper half of the project (shown in orange) until Memorial Day, when construction along this reach will be completed.



This summer, restoration of a new section of river near Jordanelle Dam will begin. The current schedule is to start work August 12, 2002 on the area upstream of where the 1999 pilot restoration project ended. Reconstruction will begin at the "white bridge" and extend upstream towards the Dam approximately .9 miles (see map on reverse side). Public access to this reach will be closed August 12 through December 15, 2002. Construction techniques will be the same as was used in 1999 and 2000. A river bypass can not be constructed; therefore, turbidity (cloudy water) downstream will be possible, unfortunately, as a result of heavy equipment crossing the river during construction. More information on this reach's restoration design will be available this summer.



Three new angler access sites, which include parking lot and restroom, are planned for construction in the coming year. These will be located at River Road South, Midway Lane South and Charleston (see map on reverse side for access site locations).

Access/Closures/Dates:



Public access to the upper half of the 2001 project reach will be open Memorial Day, 2002. (Public access to the lower half of the reach is already open) See map above.



Public access to the 2002 project reach (below Jordanelle Dam) will close August 12 through December 15, 2002. See map on reverse side.



Parking in the pullout off Highway 40 is not a UDOT-approved point of ingress/egress from Highway 40, nor is it an approved access site under the Provo River Restoration Project. "No Parking" signs have been posted in that area. The Utah Department of Transportation will place cement barriers along the entrance to the pullout early this spring and will install "No Stopping or Parking" signs along Highway 40. The access site nearest this area is off North River Road. See map on reverse side for available access site locations.

In 1999, the Utah Reclamation Mitigation and Conservation Commission began the Provo River Restoration Project (PRRP) between Jordanelle Dam and Deer Creek Reservoir to restore the middle Provo River's pattern and ecological function to a more natural condition. Many other federal, state and non-profit agencies are important to and involved in this project, which is expected to be complete in 2005. For more information about PRRP or the Mitigation Commission, call Diane Simmons at (801) 524-3146.